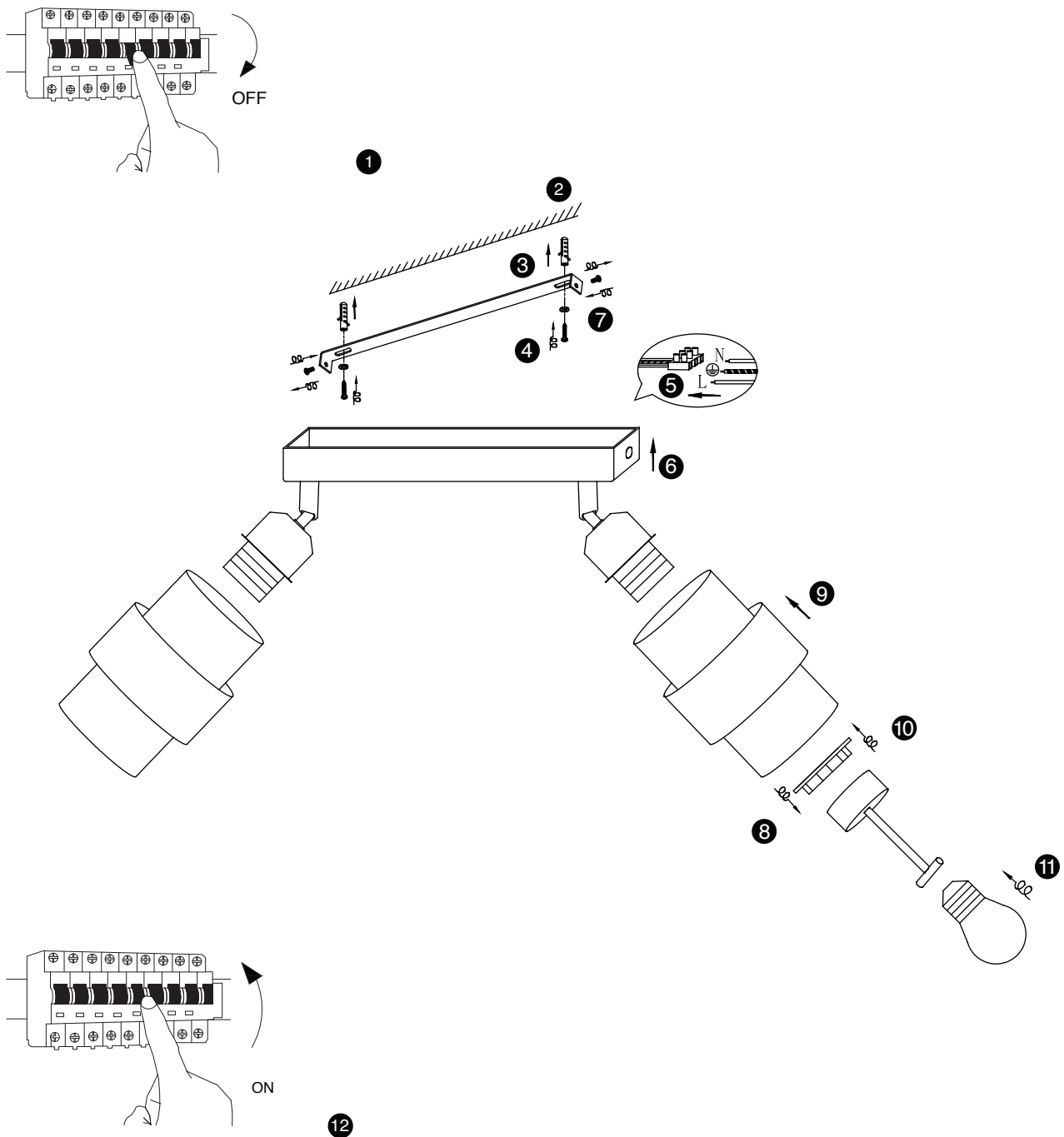


# NOVA LUCE

9236387



1. Turn off the general switch

2. Drill holes

3. Apply plastic anchors

4. Apply screws

5. Connect the wires

6. Place the product into place

7. Apply side screws

8. Untight the inside cap

9. Put the outside cap into place

10. Apply the inside cap

11. Apply the bulb

12. Turn on general switch