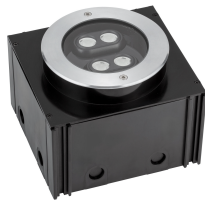


# NOVA LUCE

## PRODUCT DATASHEET

Version: 001

### PRODUCT PHOTOGRAPH



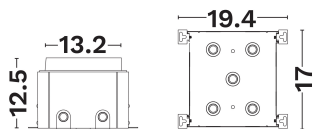
### GENERAL INFORMATION

Product Code	9844205
Product Category	Facade & Accent
Product Family	Dusty
Mounting Location	N/A
Application Environment	N/A

### DIMENSION & WEIGHT

LxWxH (cm)	L:17 W:19.5 H:12.5 cm
Cut out (cm)	N/A
Weight (Kgr)	N/A

### TECHNICAL DRAWING



### MATERIAL & COLOR

Product Color	Black
Body Material	Pvc
Cover Material	N/A

### APPLICATION & MOUNTING

Ambient Working Temp.	45 C
Type of Protection	N/A
Protection Class IK	N/A
Dimmable	N/A
Type of Dimming (Optional)	N/A
Mounting type	N/A
Mounting Depth (cm)	N/A
Led Module Replaceable	N/A
Light Source	N/A
Adjustable	N/A

### COMPATIBLE WITH

— On/Off Driver: N/A

— Triac Driver: N/A

— Dali Driver: N/A

NOVA LUCE S.A

Schimatari Viotias  
32009, Greece

+30 22620 58 121  
+30 22620 56 743

info@novaluce.com  
www.novaluce.com



# NOVA LUCE

## PRODUCT DATASHEET

Version: 001

### ELECTRICAL DATA

Power (Nominal)	N/A
Input voltage (Nominal)	N/A
Mains Frequency	50/60Hz
Output voltage	N/A
Output Current	N/A
Power Factor	N/A
Efficiency	N/A
SVM	N/A
Pst	N/A
Class	N/A

### PHOTOMETRICAL DATA

Luminous Flux	N/A
Luminous Efficacy	N/A
Color Temperature	N/A
Light Color (Designation)	N/A
CRI	N/A
SDCM	<3
Beam Angle	N/A
UGR	N/A

### LIFESPAN

Lifetime	N/A
----------	-----

### CERTIFICATES

Certificates	N/A
--------------	-----

### WARRANTY

Warranty	N/A
----------	-----

### LIGHT DISTRIBUTION

NOVA LUCE S.A

Schimatari Viotias  
32009, Greece

+30 22620 58 121  
+30 22620 56 743

info@novaluce.com  
www.novaluce.com

